



## PLAN 1

ELEVATION 1A



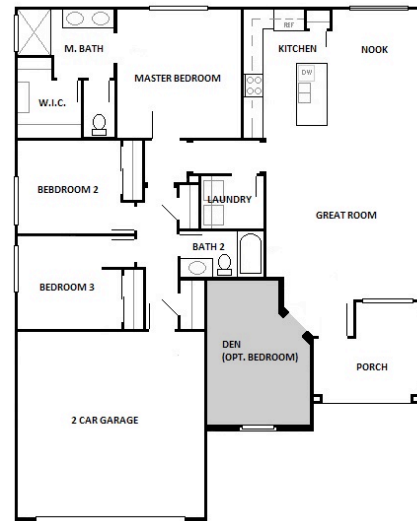
ELEVATION 1B



ELEVATION 1C



PLAN 1 FLOOR PLAN



### Plan 1

- 1694 Sq. Feet
- 3 Bedroom + Office (Optional 4<sup>th</sup> Bedroom)
- 2 Full Bath
- 2 Car Garage
- Latest Energy Saving Technology
- Latest Water Efficient Fixtures
- Beautiful Kitchens with Islands
- Large Master Suites
- No HOA or Mello-Roos

PO Box 1806, Lancaster, CA 93539

Telephone: (661) 722-1710

Email: [hillviewhomes@gmail.com](mailto:hillviewhomes@gmail.com)

[www.visithvhomes.com](http://www.visithvhomes.com)



### **UPGRADES INCLUDED AS STANDARD**

- KITCHEN ISLAND
- PANTRY
- SHAKER CABINETS (WHITE or JAVA)
- GRANITE KITCHEN COUNTERTOPS (SF REAL, GIALLO ORNAMENTAL, or SATNA CECILIA LC)
- 8' EXTERIOR DOORS
- LUXURY INTERIOR DOORS
- OVERSIZED LAUNDRY ROOM
- LVP FLOORING IN ENTRY, KITCHEN, DINING AREA, LAUNDRY, BATHROOMS (MULTIPLE COLORS TO SELECT FROM)
- STAINLESS STEEL GE RANGE, STAINLESS STEEL GE MULTI-CYCLE DISHWASHER, STAINLESS STEEL GE MICROWAVE HOOD COMBO
- SPOT LIGHTING IN KITCHEN, DINING AREA, BATHROOMS, LAUNDRY, HALLWAYS
- WIRING FOR CEILING FANS/ LIGHTING IN MASTER AND GREAT ROOM

PO Box 1806, Lancaster, CA 93539

Telephone: (661) 722-1710

Email: [hillviewhomes@gmail.com](mailto:hillviewhomes@gmail.com)

[www.visithvhomes.com](http://www.visithvhomes.com)





## **PREMIUM OPTION PACKAGES PLAN 1\***

### **KITCHEN COUNTERTOPS**

- QUARTZ TIER 1
- QUARTZ TIER 2

### **BACKSPLASH**

- Bedrosians Cloe 2.5" x 8"- Blue, Grey, White, Green
- Bedrosians Cloe 5" x 5"- Blue, Grey, White, Green

### **CABINETS**

- CHANGE STAIN COLOR- Driftwood, Sand, Coffee
- VELOUR TOUCH CABINETS- Blue, Green, Navy, Grey
- KNOB COLOR- Chrome, Oil-Rubbed Bronze, Satin Nickel, Matte Black
- KNOBS SQUARE
- BAR PULLS
- SQUARE BAR PULLS

### **FLOORING**

- EXPANDED HARD SURFACE- ALL ROOMS EXCEPT BEDROOMS
- COMPLETE HARD SURFACE

### **ELECTRICAL**

- KITCHEN PENDANTS
- 2 SPOTS IN A ROOM
- 4 SPOTS IN A ROOM

### **PLUMBING**

- PREMIUM FAUCET TRIM
- PREMIUM SINK-Single Bowl Stainless Apron Sink
- PREMIUM SINK-Double Bowl Stainless Apron Sink

### **APPLIANCES**

- WASHER/DRYER
- REFRIGERATOR

### **SOLAR PURCHASE**

- 4.05 KW SYSTEM

\*Not all options are available at all times.

PO Box 1806, Lancaster, CA 93539

Telephone: (661) 722-1710

Email: [hillviewhomes@gmail.com](mailto:hillviewhomes@gmail.com)  
[www.visithvhomes.com](http://www.visithvhomes.com)